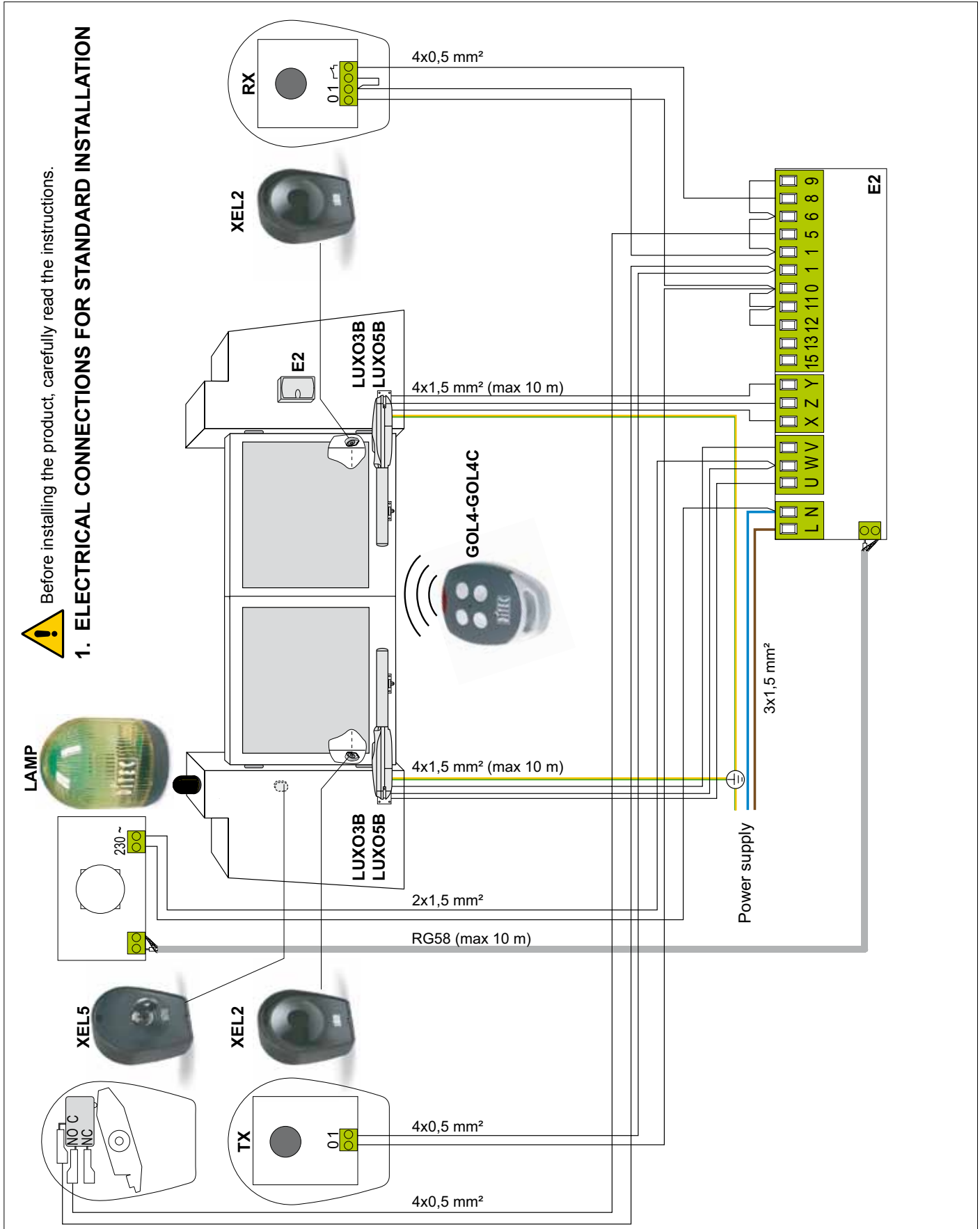


# LUXO - E2 QUICK REFERENCE

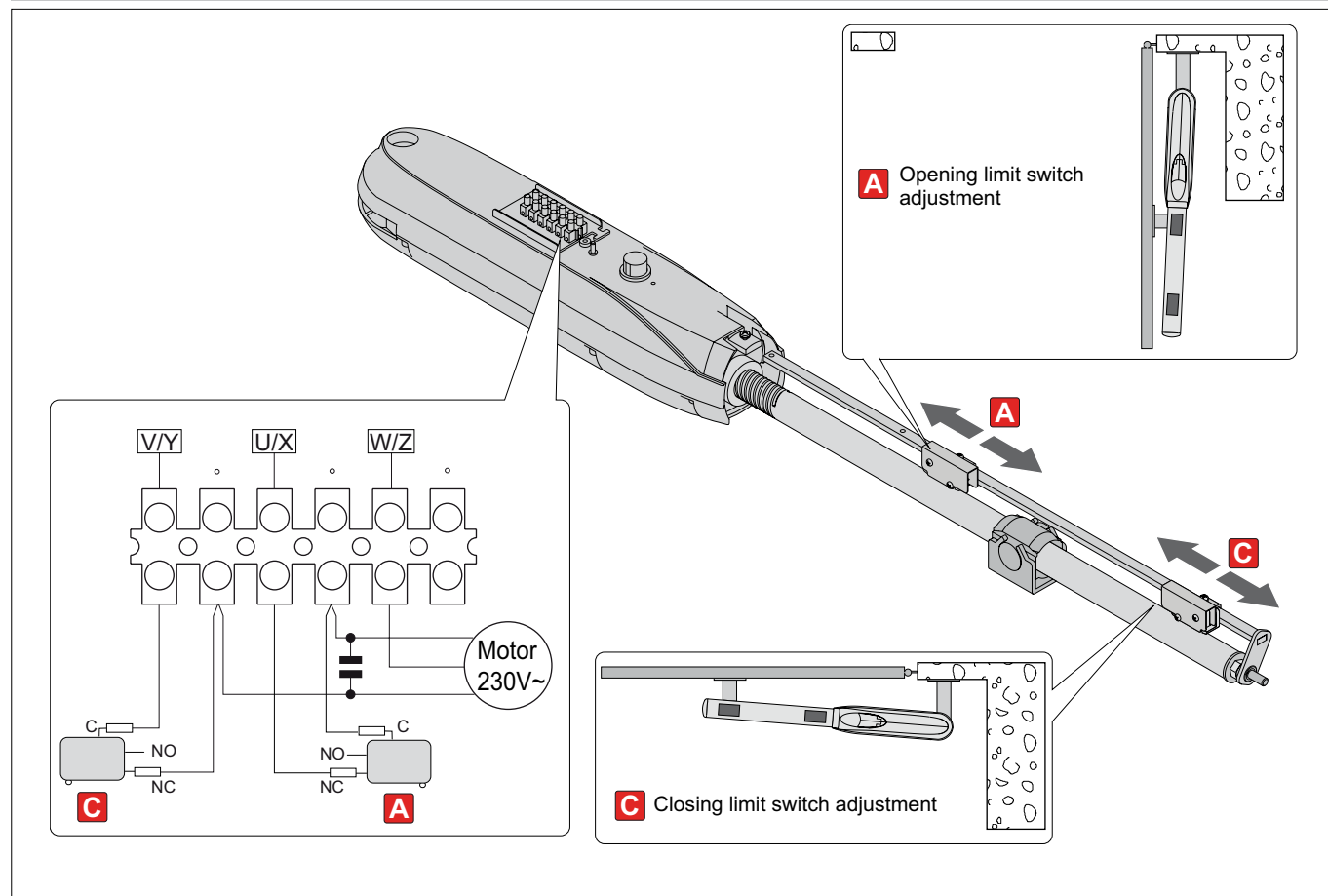
IP2009  
rev. 2012-09-26

**!** Before installing the product, carefully read the instructions.

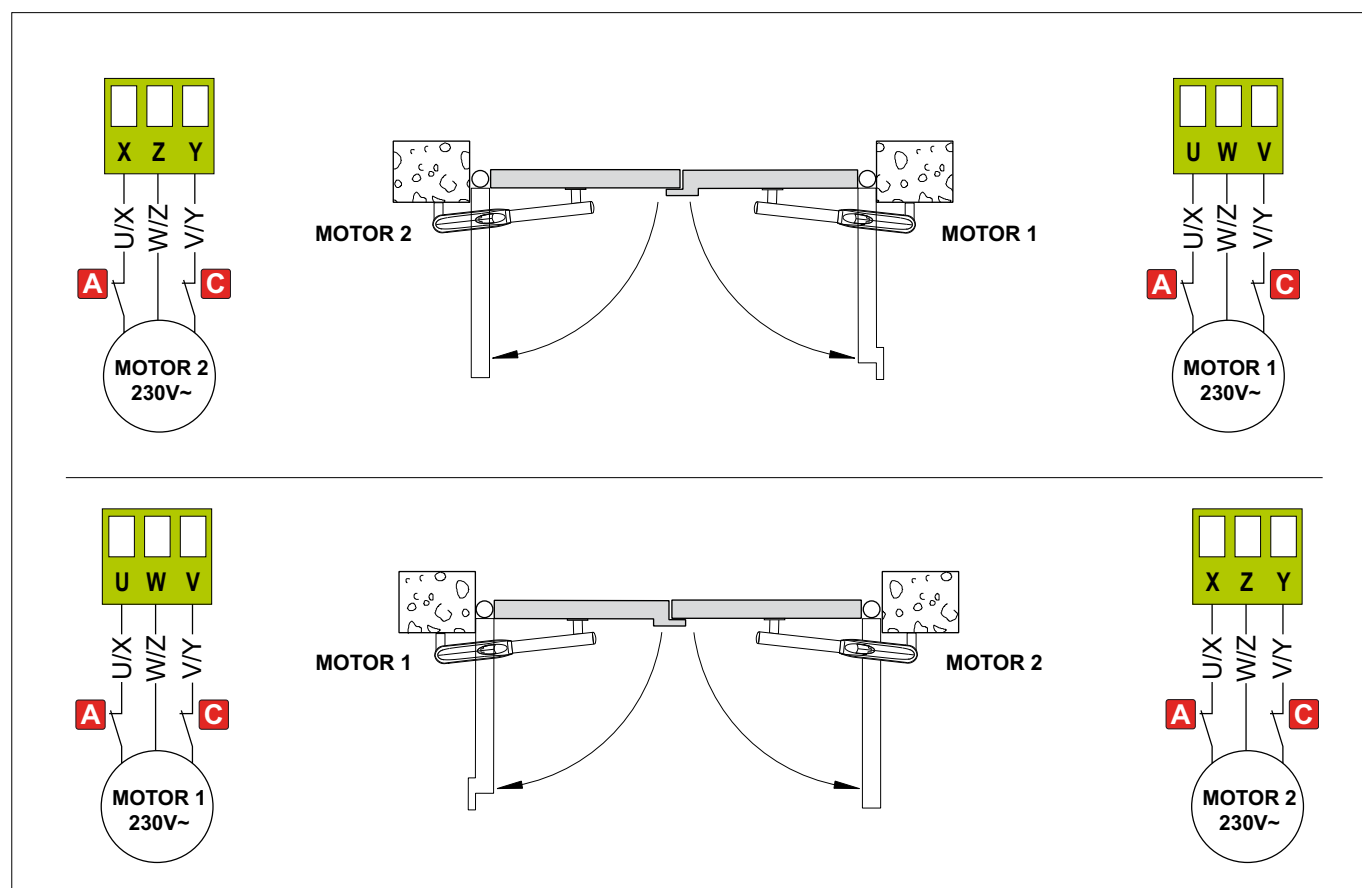
## 1. ELECTRICAL CONNECTIONS FOR STANDARD INSTALLATION



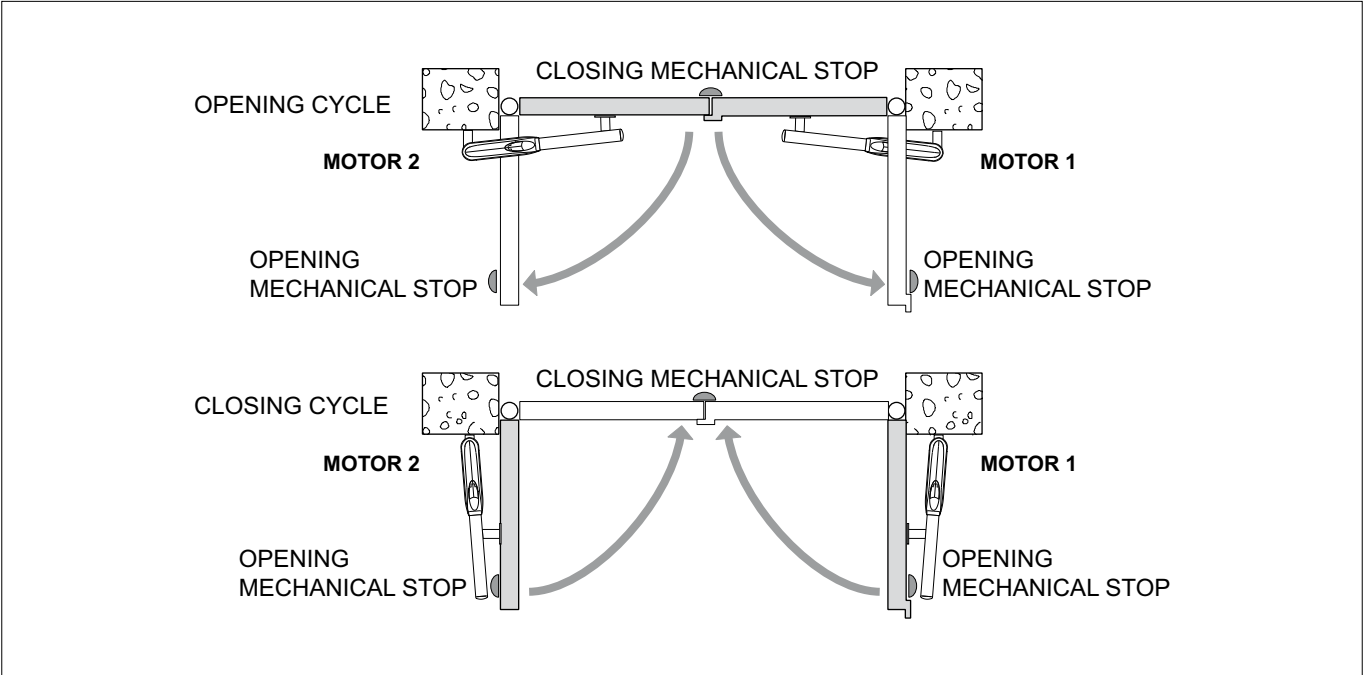
## 2. LIMIT SWITCHES CONNECTION (OPTIONAL)



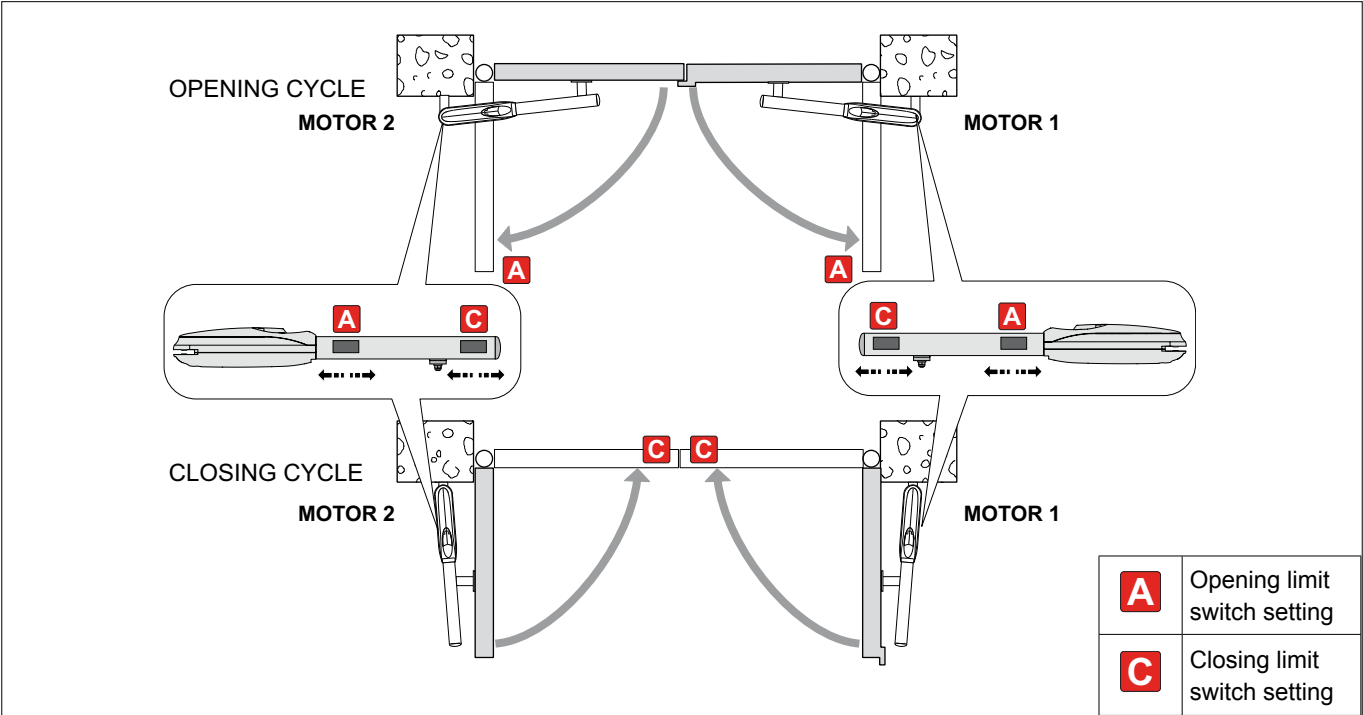
## 3. LUXO MOTORS CONNECTION



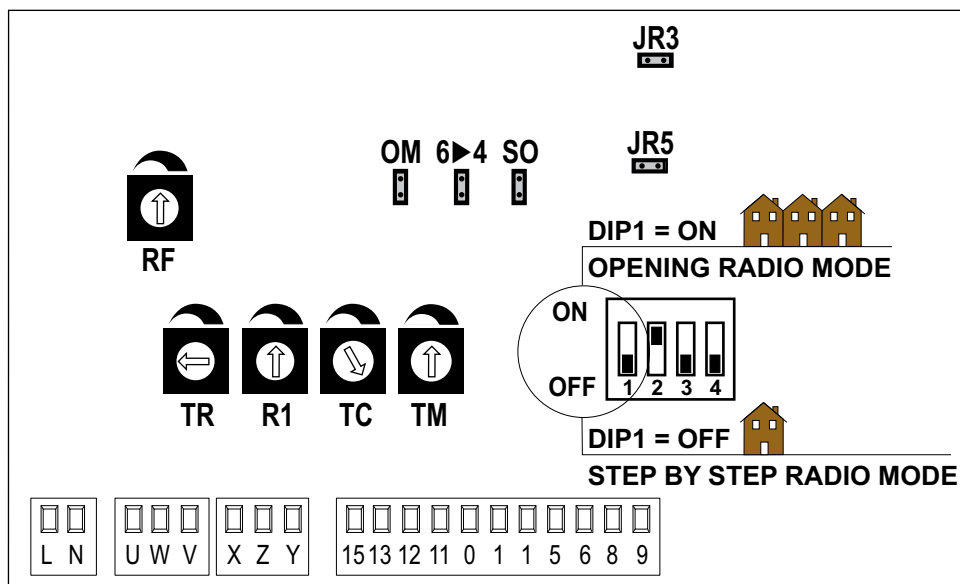
4.1 USAGE WITHOUT LIMIT SWITCHES



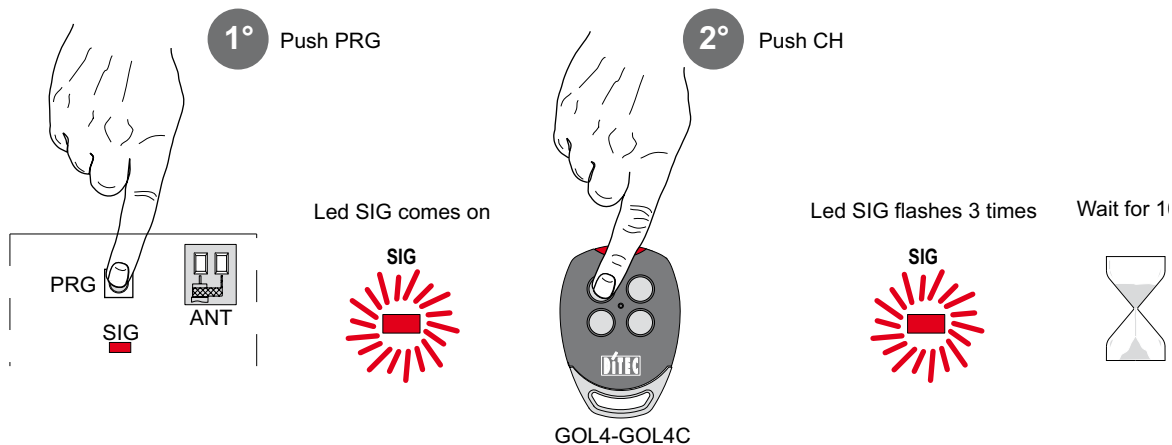
4.2. USAGE WITH STOP LIMIT SWITCHES (OPTIONAL)



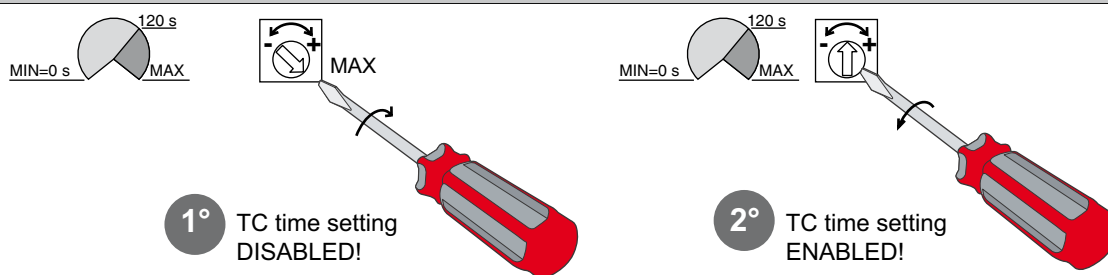
## 5. E2 STANDARD SETTING



## 6. RADIO ENABLING



## 7. AUTOMATIC CLOSING SETTING



For different setting and further information consult the automation instruction manual, the control panel instruction manual and radio instruction manual.



**DITEC S.p.A.**

Via Mons. Banfi, 3

21042 Caronno Pertusella (VA) - ITALY

Tel. +39 02 963911 - Fax +39 02 9650314

www.ditec.it - ditec@ditecva.com