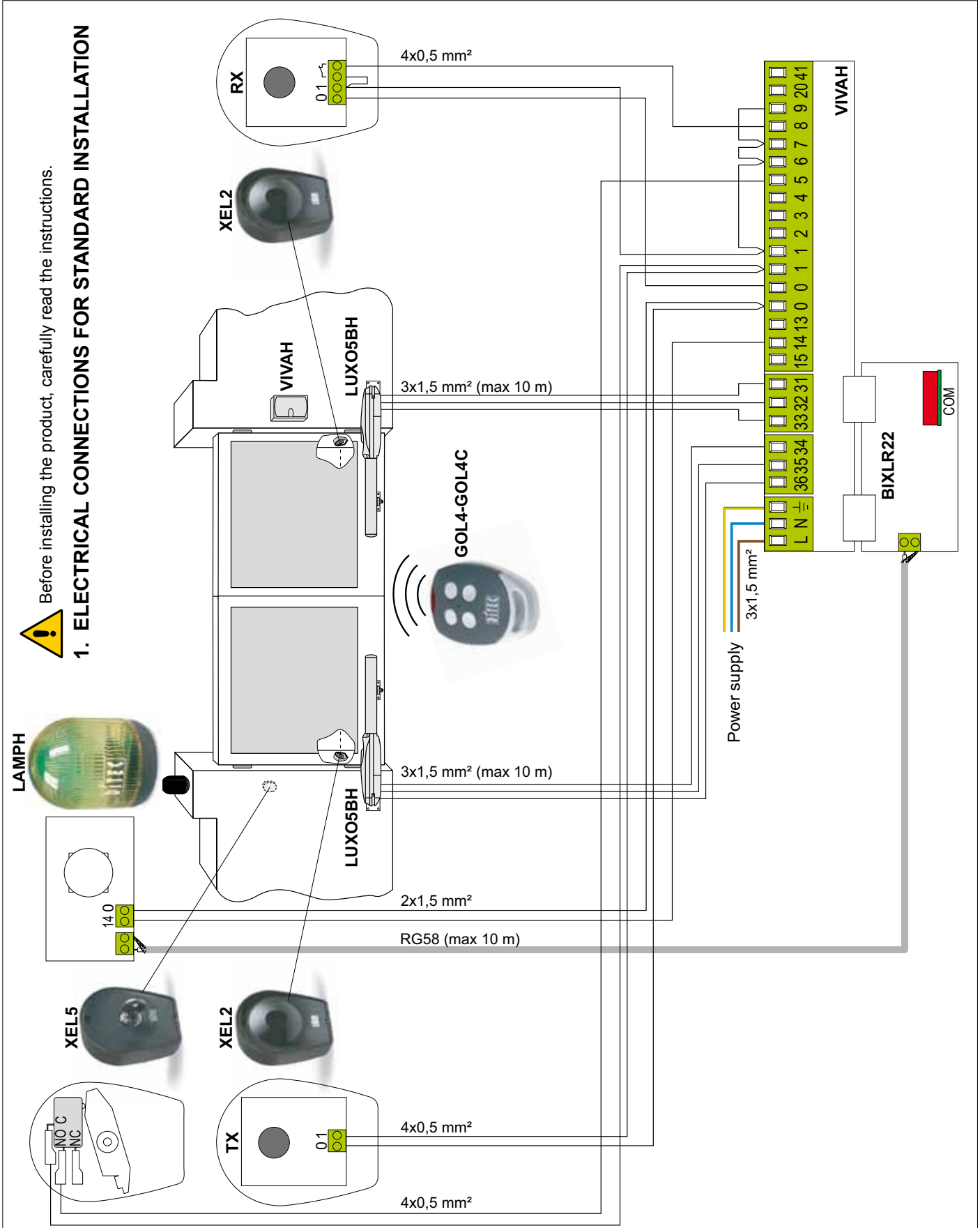


## LUXO - VIVAH QUICK REFERENCE

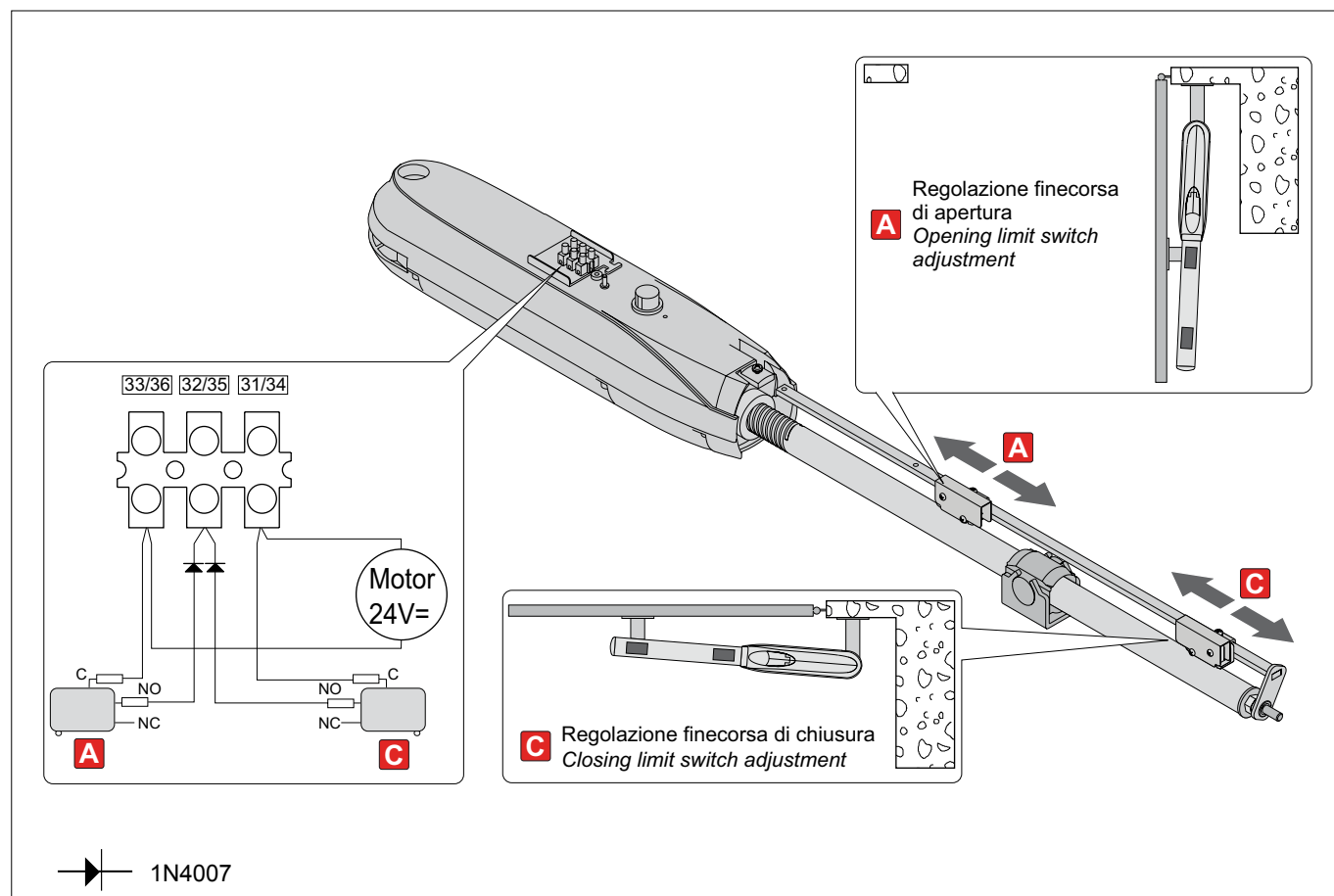
IP1657  
rev. 2012-09-26

**!** Before installing the product, carefully read the instructions.

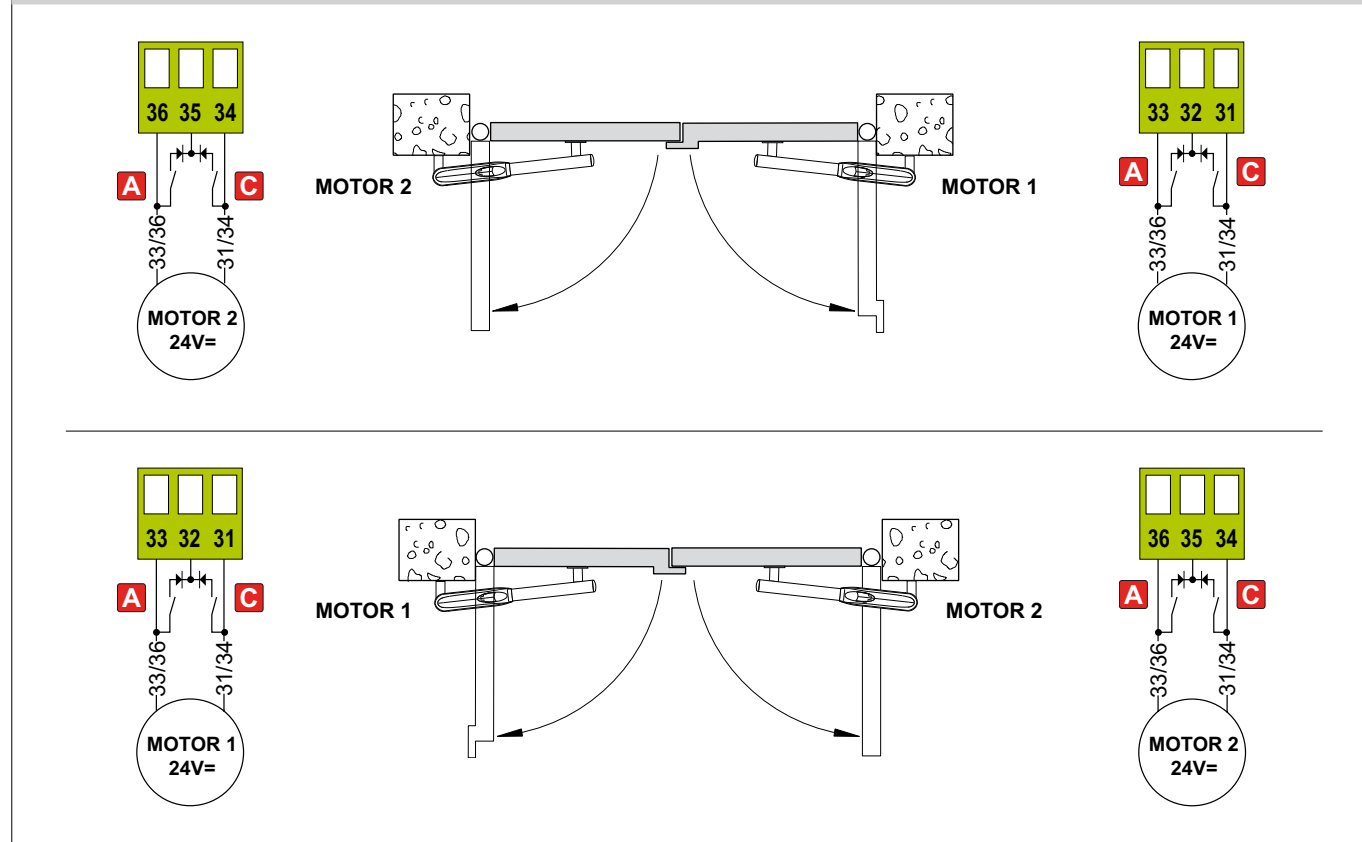
### 1. ELECTRICAL CONNECTIONS FOR STANDARD INSTALLATION



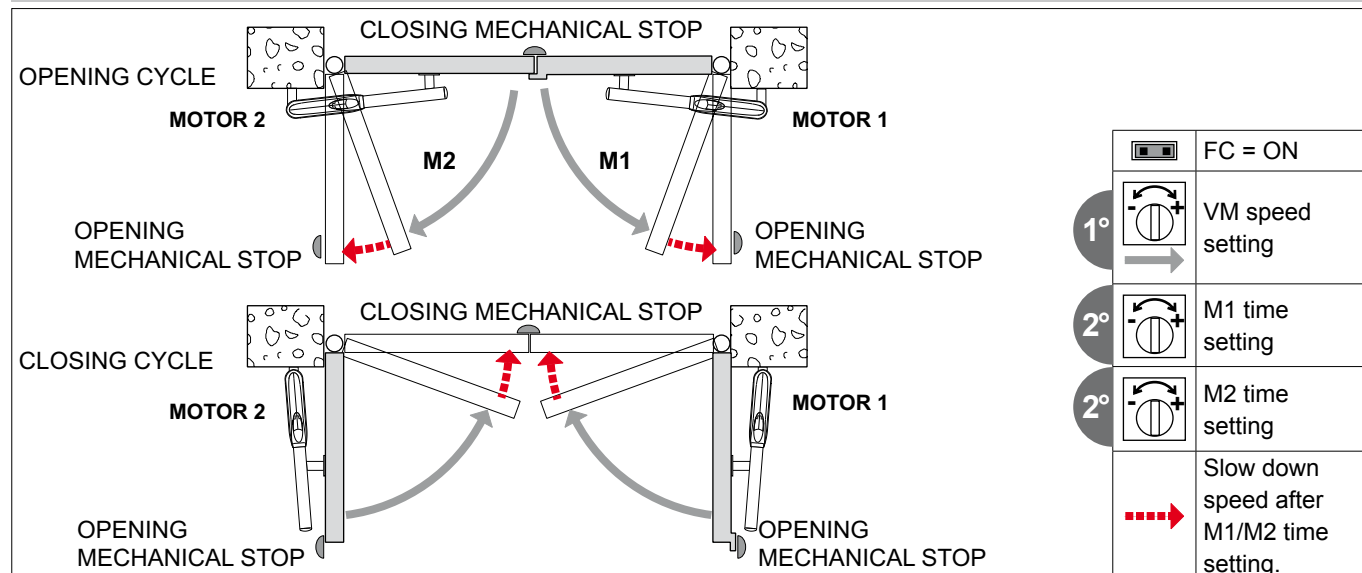
## 2. LIMIT SWITCHES CONNECTION (OPTIONAL)



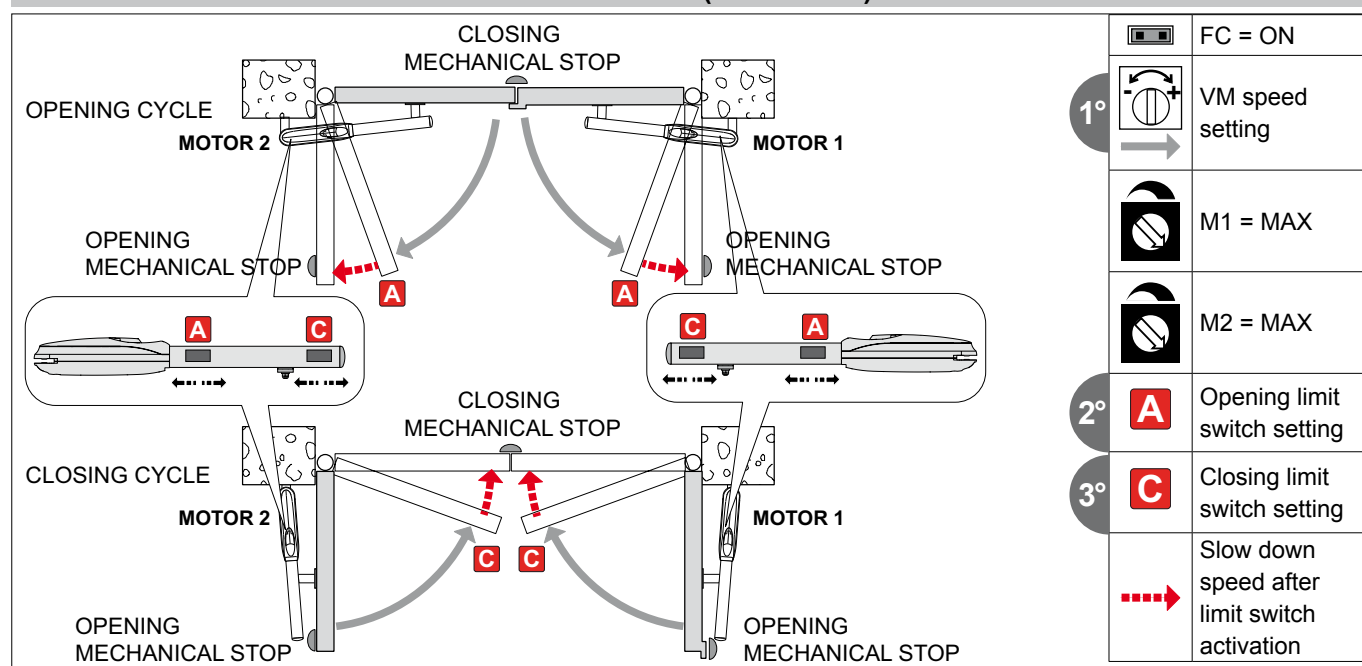
## 3. LUXO5BH MOTORS CONNECTION



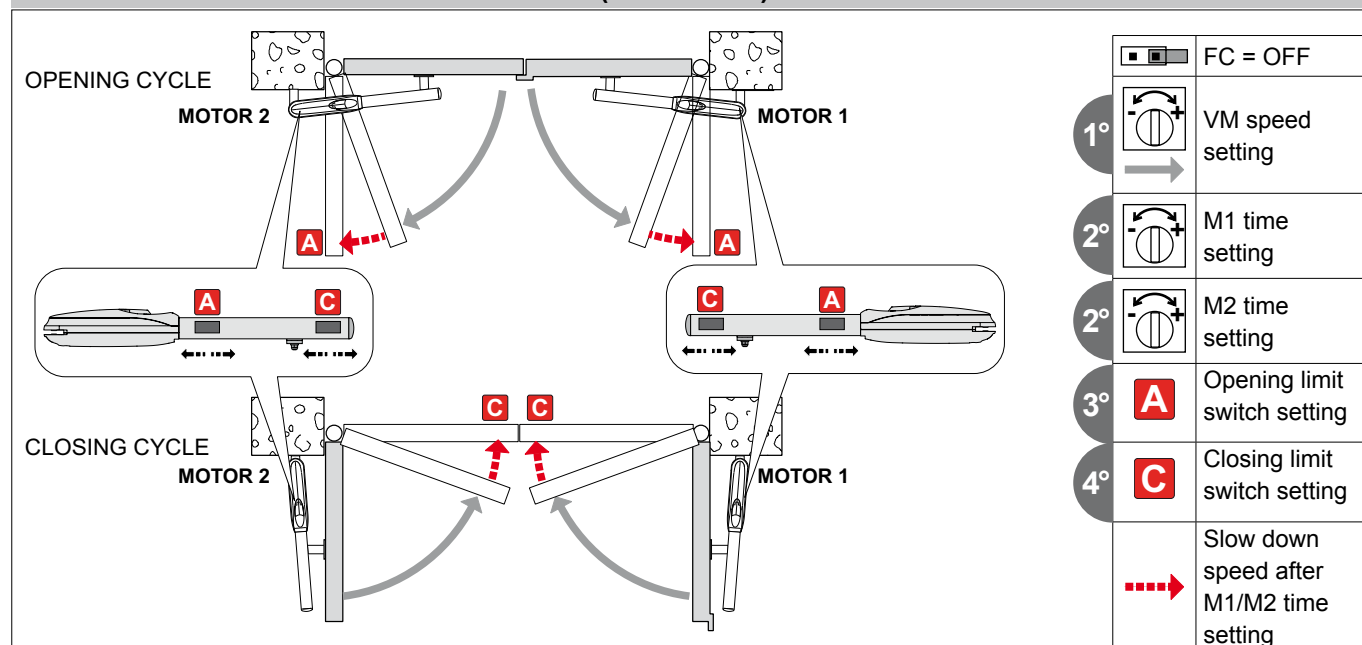
## 4.1 USAGE WITHOUT LIMIT SWITCHES



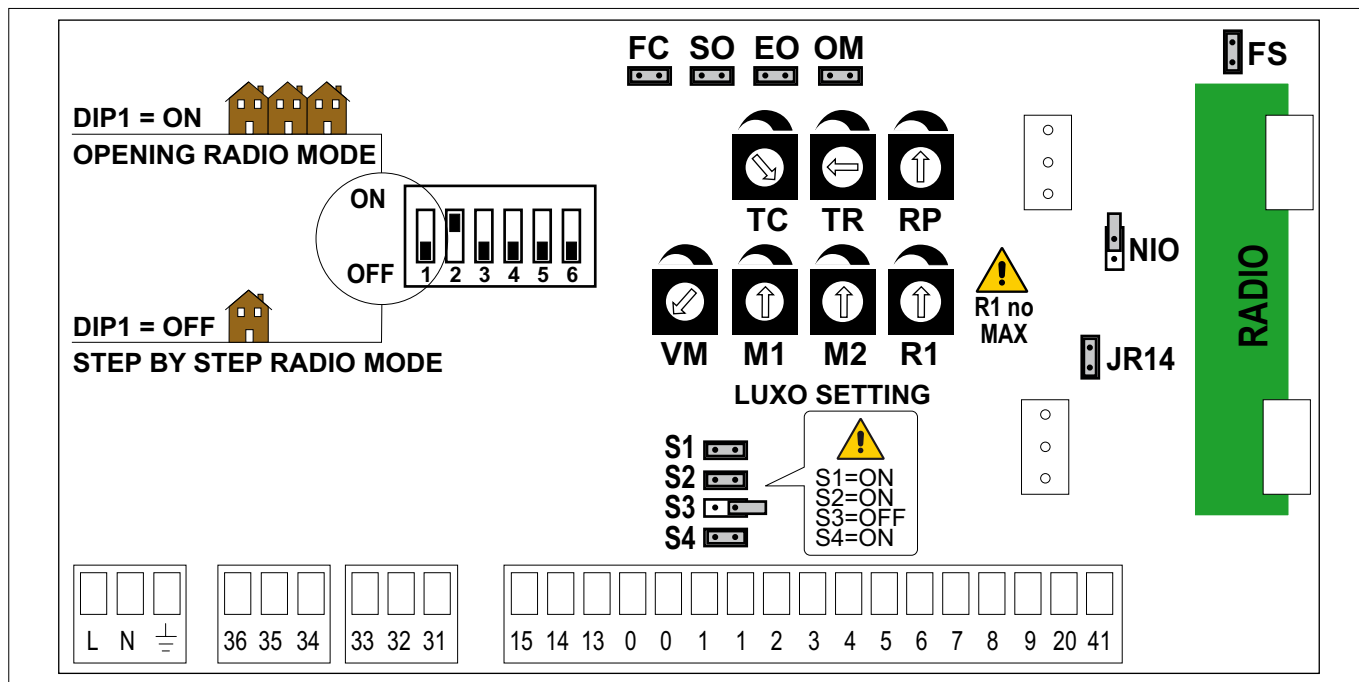
## 4.2 USAGE WITH SLOW-DOWN LIMIT SWITCHES (OPTIONAL)



## 4.3. USAGE WITH STOP LIMIT SWITCHES (OPTIONAL)



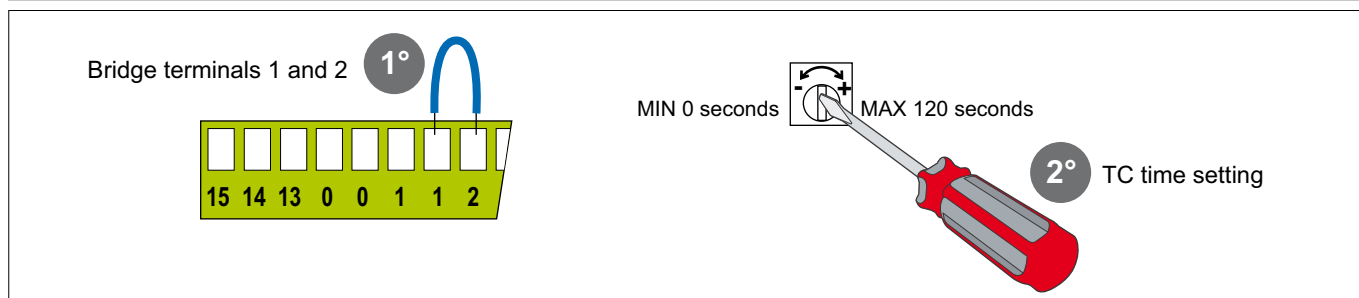
## 5. VIVAH STANDARD SETTING



## 6. RADIO ENABLING



## 7. AUTOMATIC CLOSING SETTING



For different setting and further information consult the automation instruction manual, the control panel instruction manual and radio instruction manual.



**DITEC S.p.A.**  
Via Mons. Banfi, 3  
21042 Caronno Pertusella (VA) - ITALY  
Tel. +39 02 963911 - Fax +39 02 9650314  
www.ditec.it - ditec@ditecva.com