



Ditec NeoS

EN

Operator for sliding gates in residential and small commercial applications

ALL INCLUSIVE



Versatile

A complete range for all your residential and light commercial applications.

Ditec NeoS operates with gates up to 1.000 kg of weight and is designed to work even in case of intense usage and demanding environmental conditions. The control panel is integrated in the gear motor and provides a wide choice of advanced functions. Ditec NeoS is easy and quick to install and maintain.



Safety

Position and speed are managed in complete safety thanks to the virtual encoder and magnetic limit switches (integrated for some versions). Ditec NeoS range feature a 24 V DC motor and maximum protection of internal and moving parts (IP24 rated). Ditec NeoS+ versions also offer external LED displays for additional safety and comfort.



Pleasant design

Pleasant and innovative aesthetics for all environments: Ditec NeoS comes with a new distinctive design and a high tech two colours combination (graphite gray and metallic light grey). Its compact sizes and intelligent installation solutions ensure a discrete presence of NeoS in your property.



The pleasant performance

Discover the features which make Ditec NeoS truly unique

Versatile

The full range of gate operators and accessories satisfies installation requirements in various residential and commercial environments.

2 levels of performance

NeoS for standard applications, in complete safety.

NeoS+ for advanced functions and exclusive technical features: External LEDs for communicating operator status, USB connection for accurate diagnostics, set-up for solar-power connection, and the possibility of controlling courtesy or external lighting.

Performance and technical content

- Opening and closing speed up to 25 cm/sec
- Suitable for gates weighting up to 1000 kg
- Low consumption and energy saving mode
- Battery kit available in case of fault of tension
- 433 MHz and 868 MHz frequencies available
- Possibility to control courtesy or external ambient lights (NeoS+ only)

Safety

Safeguard against accidents

For maximum safety during closing operations, the gate operator can be equipped with photocells and sensitive edges: in case of contact, the automation reverses the movement preventing damage to persons and things.

Furthermore, the moving parts are enclosed in a robust case

and a 24 V DC gear motor is used to minimise electrical risks (e.g. electrocution) in case of accidental opening of the operator.

Protection against the elements

Thanks to the choice of materials, positioning of the internal components and wiring layout, humidity, bad weather and insects are no longer a problem.

With the NIO function, the temperature sensor adapts gear motor performance in case of cold, ice or snow down to -35°C!

Ditec NeoS is compatible with a full range of protection devices such as photocells, sensors, controls and safety edges.

Pleasant

Innovative and fresh look

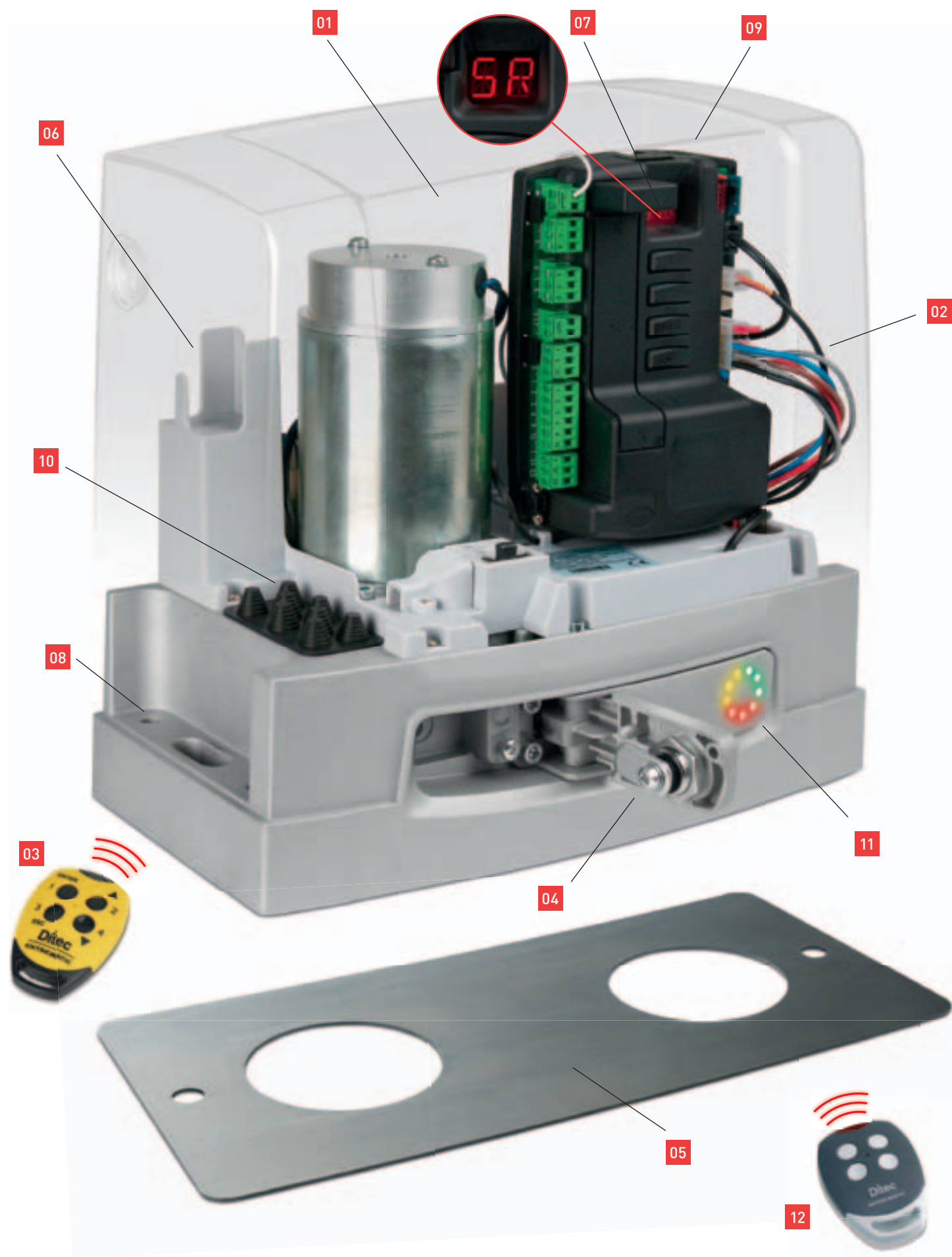
The modern design and clean aesthetics perfectly match all house styles. The integrated control panel and the possibility to mount photocells inside the cover grant a neat installation.

Control and security in your hands

The installation of Ditec NeoS can be greatly customised thanks to a wide selection of accessories. While comfortably seated in your car, simply press a button on your remote control and Ditec NeoS will spring into action, powerful and silent. The integrated Ditec solutions further allows you to operate your Ditec NeoS, turn on lights, open your garage door and control automatic road barriers... with just one remote control!



Comfort for the installer, clarity for th



e user

Comfort for installation

- Optimised layout of the internal components **01**
- Installation cables conveniently separated from "in-factory" cabling **02**
- Special transmitter for easier configuration of the operator **03**
- Practical and convenient release handle, without sharp edges **04**
- Enclosed steel plate for a convenient and rapid installation (stronger plate available as option) **05**

01



02



03

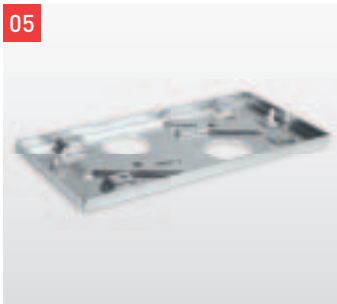


04



- Internal photocells' slots for greater safety and practicality **06**
- 2 digit display for easy setting and quick check of operator status **07**
- Adjustable height to ensure a perfect coupling with rack **08**
- PC diagnostic via USB (NeoS+ only) **09** to allow real-time monitoring of operator and download of data tracking for diagnostic
- Thanks to the choice of materials, positioning of the internal components and wiring layout, humidity, bad weather and insects are no longer a problem **10**

05



06



07



08



Clarity for the user

- The LED displays inform the user of the operator's status (NeoS+ only) **11** :
 - green indicates regular functioning
 - yellow stands for battery mode and check-up time
 - red signals presence of faults or release cover open
- The release handle is easily accessible in the front of the cover and comes with a closing key for increased safety
- Ditec NeoS is controlled via Gol 4 transmitters and pre-programmed with all functions: step-by-step opening, partial opening, and courtesy light control (NeoS+ only) and stop command **12**

11

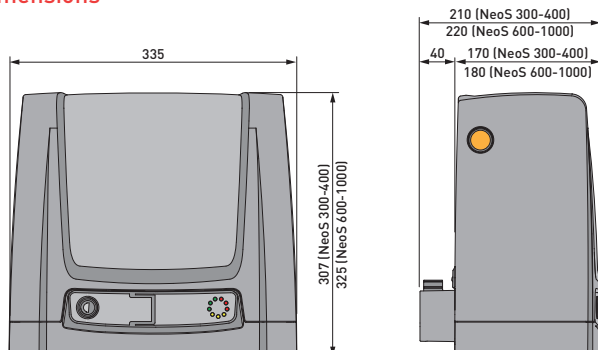


12

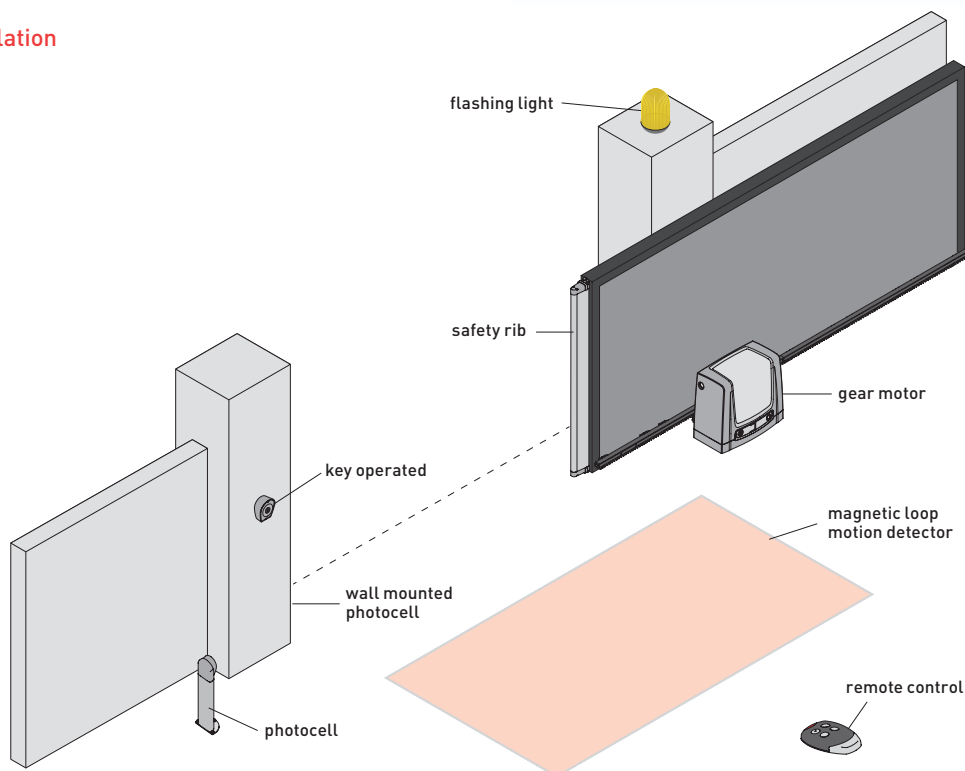


Technical features and example of installation

Dimensions



Example of installation



Easy to choose: the operator

NES300 EH	NeoS operator 300 kg, 24 V DC
NES400 EH	NeoS operator 400 kg, 24 V DC
NES600 EH	NeoS operator 600 kg, 24 V DC
NES300 EHP	NeoS+ operator 300 kg, 24 V DC
NES400 EHP	NeoS+ operator 400 kg, 24 V DC
NES600 EHP	NeoS+ operator 600 kg, 24 V DC
NES1000 EHP	NeoS+ operator 1000 kg, 24 V DC

Easy to choose: NeoS specific accessories


NES100PSU	Steel base plate for heavy applications
NES100RFX	Retrofit plate for adaptation to the CROSS CS61 and Cross 5-7-8-12-18 models and the automation for sliding gates with steps 190, 200, 240 and 250 mm
NES100WSP	"OMEGA" lifting system which can be regulated from the ground
NES100PCM	Pair of photocells for interior installation
NES100FCM	Magnetic limit switches
NES100BBU	Emergency battery set
NES100USB	USB connection kit
NES100TXT	Radio transmitter for setting functions for 433 MHz
NES200TXT	Radio transmitter for setting functions for 868 MHz
GOL868RS	868 MHz receiver card for electronic panels with built-in radio decoder
GOL868T	Radio transmitter with 4 functions and rolling code for 868 MHz
GOL868TC	Radio transmitter with 4 functions and fixed code for 868 MHz
NES100CKT	Chain traction kit

Note: for DO IT and other accessories, please consult our general pricelist NA.

Technical specifications

Description: electromechanical gear motor	NeoS 300 - NeoS+ 300	NeoS 400 - NeoS+ 400	NeoS 600 - NeoS+ 600	NeoS+ 1000
Stroke control	virtual encoder	virtual encoder	limit switch + virtual encoder	limit switch + virtual encoder
Gate leaf weight	300 kg	400 kg	600 kg	1000 kg
Maximum opening	12 m	12 m	20 m	20 m
Service index	4 - intensive	4 - intensive	4 - intensive	4 - intensive
Intermittent operation	S2 = 30 min S3 = 50%	S2 = 30 min S3 = 50%	S2 = 30 min S3 = 50%	S2 = 30 min S3 = 50%
Power absorption	230 V AC 50/60 Hz	230 V AC 50/60 Hz	230 V AC 50/60 Hz	230 V AC 50/60 Hz
Motor power supply	24 V DC	24 V DC	24 V DC	24 V DC
Power input	1.2 A	1.2 A	1.5 A	2 A
Thrust	300 N	400 N	600 N	1000 N
Opening and closing speed	0.1 - 0.25 m/s	0.1 - 0.25 m/s	0.1 - 0.24 m/s	0.1 - 0.19 m/s
Release system for manual opening	key-operated	key-operated	key-operated	key-operated
Operating temperature	-20°C / +55°C [-35°C / +55°C with NIO enabled]	-20°C / +55°C [-35°C / +55°C with NIO enabled]	-20°C / +55°C [-35°C / +55°C with NIO enabled]	-20°C / +55°C [-35°C / +55°C with NIO enabled]
Protection level	IP 24	IP 24	IP 24	IP 24
Product dimensions (mm)	335x210x307	335x210x307	335x220x325	335x220x325

System functions

Description	NeoS 300 - NeoS 400 NeoS 600	NeoS+ 300 - NeoS+ 400 NeoS+ 600 - NeoS+ 1000
Control panel	ref. CS12E for 1 24 V DC motor with built-in receiver	ref. CS12M for 1 24 V DC motor with built-in receiver
Radio frequency	433.92 MHz standard 868.65 MHz (with GOL868R4)	433.92 MHz standard 868.65 MHz (with GOL868RS)
Mains power supply	230 V AC / 50/60 Hz	230 V AC / 50/60 Hz
Batteries	■ (optional)	■ (optional)
 Energy saving mode		■
Solar energy ready		■ (ready)
Accessories power supply	24 V DC / 0.3 A	24 V DC / 0.5 A
Flashing light	24 V DC	24 V DC
Gate open warning light and open gate indicator output		■
Courtesy light output (up to 400 W)		■
External LED output		■
Micro USB connection per PC diagnostic		■
Automatic closing activated by external timer or remote signal (opening/closing can be programmed daily/weekly)		■
8,2 KΩ input for safety edge	■ (with GOPAV system)	■ (with GOPAV system)
Force setting	via display	via display
ODS - Obstruction Detection System	■	■
Speed setting	via display	via display
Braking / slowing down	via display	via display
Partial opening control	■ (only with remote control)	■ (with remote control and selector)
Open / Close control	■	■
Temporised automatic closing	■	■
Hold-to-run control	■	■
Emergency stop / reverse	■	■
Safety test	■	■
Soft Start	■	■
NIO - Antifreeze system	■	■

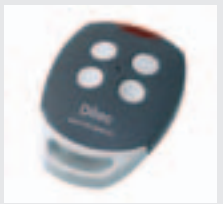
Accessories

The wide range of Ditec accessories allows the access systems to be used with various control and monitoring options

Gol 4

Remote Controls

Simply press a button on the remote control and the Ditec drive system springs into action. Thanks to this accessory, bad weather will never be a problem again.



Lan 4

Digital Keypad Systems

With digital, anti-vandalism combination keypad and passcode up to 8 digits.



Gol 4M

Keypad Transmitter

Four-channel encoded radio command – open by entering the code.



Lamp

24 V DC flashing light with flashing operation controlled by the control panel.



Lan 7

Device with Proximity Control

Remote identification system featuring TRANSPONDER technology.



SOF Safety Edge

Maximum safety during opening and closing for all entrance-control systems.



Xel 5

Key Selector

With anti-break-in device.
For wall or vertical mounting.



Xel 2 and Lab 3

IR Photocells

For maximum automation safety.
Can be wall or vertical mounted.
Modulated infrared beam.



When building the system, only use Ditec accessories and safety devices.

Every Ditec automation features CE marking and is designed and built in compliance with the safety requirements of the Machinery Directive (2006/42/EC), of the Electromagnetic Compatibility Directive (2004/108/EC) and of the Low Voltage Directive (2006/95/EC) and of other Directives, laws, specific standards for special products and situations.

The Company reserves the right to make changes which may improve the products.

For this reason, the technical details given are not binding.

Pictures were taken with the consent of those concerned or in public locations.

Further information can be found in the Technical Manuals available at the website: www.ditecentrematic.com

ENTRE//MATIC



Entrematic Italy S.p.A.

Via Mons. Banfi, 3 • 21042 Caronno P.lla (VA) • Italy

Tel +39 02 963911 • Fax: +39 02 9650314

ditec@entrematic.com

www.ditecentrematic.com • www.entrematic.com

Cod. N204B - Rev. 2 - 06/2015
Ditec NeoS

gdp milano 148865

Ditec branches are in: France, Germany, Portugal, Spain, Turkey, USA and Canada.
For addresses and contacts visit our website www.ditecentrematic.com

